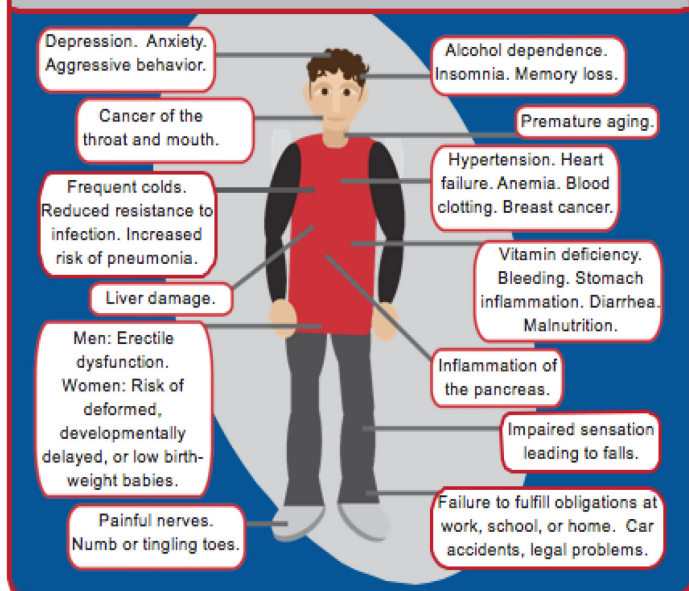


Effects of High-Risk Drinking

Risks of Unhealthy Drinking



Alcohol can affect the following:

- **Brain**
- **Heart**
- **Liver**
- **Pancreas**
- **Kidneys**
- **Immune System**

High-risk drinking may lead to social, legal, medical, domestic, job, and financial problems.

It may also cut an individual's lifespan and lead to accidents and death from drunken driving.